



www.InformedMPS.com

sales@softwareintellect.net  
248.229.5905

# Informed MPS Manufacturing Production System

REAL TIME SHOP FLOOR  
COMMUNICATIONS

IMPROVED BUSINESS  
PROCESS

USER DEFINED DEFECT  
TRACKING

USER DEFINED CHECK-  
LISTS

USER SECURITY

CORRECTIVE ACTIONS  
MANAGEMENT

FULL MANAGEMENT AND  
HISTORICAL REPORTING

SUPPLIER REPORTING

ORDER RELEASE

DATA INTEGRATION  
WITH OTHER EXTERNAL  
SYSTEMS

DATA MINING



**T**rends in quality management focus on engaging the operators on the shop floor to help identify and correct product and process problems. They are also expected to collect real time data on non conforming product and support continuous improvement efforts. For these initiatives to be successful people require the right tools. With the advantages of configurable software, PDA's and tablet PC's this theory can now be put into practice.

## ***So what's really driving the need for continuous improvement?***

So why are these technologies getting more attention? Whether it's called Lean Manufacturing, Six Sigma or just straight cost cutting, the need to operate more effectively has always been a defined objective of top management. But in today business climate there are even more pressing motivators:

- The Customer is demanding it.
- The CFO is under continuous pressure to cut cost.
- With easy access to outsourcing the survival of your business depends on it.

## ***Why should you care?***

With a constant reduction in resources, more accountability for shop floor output, the possibility of liability actions from your customers on delivered product, increased cost in premium freight, constant efforts to decrease re-work, scrap, field failures, and warranty cost all add up to unquestionable basis for continuous improvement actions. These improvement actions have to be focused where the best return on investment can be found. In order to do this you need information which is available, reliable, consistent and actionable. Without a systematic approach and the correct technology trying to compile and use this information is difficult at best.

So what are the real problems we need to solve?

### *The Cost of Product Failure*

- Unmet customer shipment expectations because of lack of qualified product.
- The failure to link supply chain material, sub assemblies or components to overall product quality and delivery performance.
- The inability to identify and reduce the number of product and process failures on the shop floor in real time.
- The inability to communicate product and process failures to the appropriate work cell and or operation and compare it to pre-identified threshold values.
- The bottleneck created by non conforming product at setup, in-process or last off quality checks in all operations or at final inspection.
- The lag time between identification of a product non conformance and the fix or repair function.
- Lack of standardized quality checklists and data sheets for consistency in shop floor reporting.
- The difficulty in focusing continuous improvement efforts on manufacturing processes that have the highest return on investment.



www.InformedMPS.com

sales@softwareintellect.net  
248.229.5905

REAL TIME SHOP FLOOR  
COMMUNICATIONS

IMPROVED BUSINESS  
PROCESS

USER DEFINED DEFECT  
TRACKING

USER DEFINED CHECK-  
LISTS

USER SECURITY

CORRECTIVE ACTIONS  
MANAGEMENT

FULL MANAGEMENT AND  
HISTORICAL REPORTING

SUPPLIER REPORTING

ORDER RELEASE

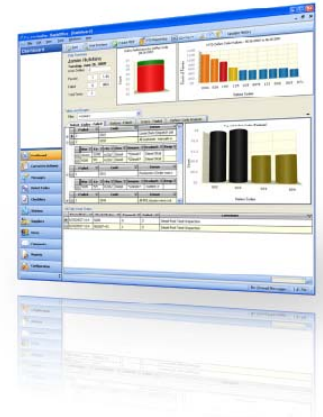
DATA INTEGRATION  
WITH OTHER EXTERNAL  
SYSTEMS

DATA MINING

# Informed MPS Manufacturing Production System

## The Solution - InformedMPS

- The InformedMPS suite of software electronically tracks product and process failures throughout the manufacturing process giving you dock to dock visibility into your plant or facility. The data collected by the MPS system reporting module can be used for management review, operator awareness and supplier quality programs giving you complete access to all quality issues. This information can also be used to support the PFMEA and Control Plan development created by the engineering team.
- The InformedMPS system can record product and process failures in real time through the use of static or roaming inspection stations or can be input by the work cell operator.
- The InformedMPS software system uses a real time communication engine to send quality data back to the operation or processes where failure has occurred. This communication can also be sent to the appropriate company supervisors and/or suppliers of specific material, sub assembly or component.
- The InformedMPS software system provides visual scorecards at each work cell which indicate the overall quality of the stations output. These score cards tell management how well the operation is performing based on pre-defined quality threshold values. This function also allows the operators and management team to Focus short and long term continuous improvement efforts where impact will be the greatest.



## Product Highlights

- Multiple station configurations including manufacturing work cell, stationary /roaming inspection and maintenance and repair. User configurable stations add flexibility to current and future network architecture.
- User defined quality indicators, checklists and defect thresholds for both product and process management.
- Work cell graphical quality scorecard representing current quality performance and quality performance for a specified periodicity.
- Email and text notification engine with user defined events triggers.
- Identify supplier failures based on quality indicator and frequency and communicate via email. User defined notification to the supply chain on all quality issues based on the supplied component, sub-assembly, or material.
- One click access to work instructions for shop floor work cells and maintenance operations.
- Administrator defined follow-up activity drop down box on each inspection checklist or menu for failed items. Follow-up notices tied to administrator defined e-mail accounts
- The Management Dashboard provides you with a graphical view of current failures for multiple work cells and work orders.
- Inspection stations are responsible for recording pass / failure data. This data will be automatically sent to the work cell where the failure occurred.
- Production stations provide visual scorecards to line operators and shop floor management so real time adjustments can be made during production.